



GOVERNMENT OF GOA

Directorate of Agriculture

INFORMATIVE BOOKLET

Schemes for Benefit of Farmers



KRISHI CARD

To avail assistance/subsidy under any scheme, the farmer should possess Krishi Card.



KRISHI CARD uniquely identifies each farmer and creates a central repository of all his farming assets and land holdings. Additionally, a unified scheme management framework ensures that the data about the farmer is seamlessly shared across schemes/ subsidies and gives an efficient central monitoring mechanism to the department as well.

DOCUMENTS REQUIRED FOR KRISHI CARD

1. Passport size photo copy.
2. Land Index forms I & XIV (Latest) with land detail.
3. Self declaration (format available in Zonal offices).
4. Sale Deed/ Power of Attorney/ N.O.C/ Lease Deed/ Death certificate (Whichever applicable).
5. Aadhar card copy.
6. Election card copy.
7. Ration card copy.
8. Caste certificate (If applicable).
9. Bank pass book copy (1- page xerox).
10. Mandate form.
11. Bank pass book copy & any photo ID proof of Nominee.
12. Soil Sample of each survey number.

Krishi Card is also provided to the Community farming groups/Self help groups

Phone No. (0832) 2465840, 2465443, 2465845

E-mail: dir-agri.goa@nic.in

Website: www.agri.goa.gov.in

Assistance for cultivation of Coconut with local tall varieties.: Coconut saplings/ha. in two yearly installments Min. area 0.1 and Max 5ha.



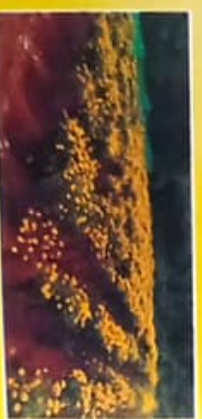
Assistance for cultivation of Banana, Pineapple & Papaya: 75% subsidy limited Rs. 1,20,000/-per ha. Min. area 0.1 ha and Max.4.0 ha.



Assistance for cultivation of Flowers i.e. Bulbous perennial / Cut flowers: 75% subsidy limited to Rs. 1,20,000/- per ha. in two installment. Min.0.05 and Max.4ha.



Assistance for cultivation of Loose Flowers: 75% subsidy limited to Rs. 75,000/- per ha. Min. 0.05 and Max.4ha.



Assistance for cultivation of Fruits and Spices (Mango, Chickoo, Nutmeg, Cashew, Kokum, Guava, etc.): 75% subsidy limited Rs. 60,000/- per ha. Min. 0.1ha. Assistance is provided in three installments



Assistance for replacing old deceased senile Cashew trees with planting of new grafts: 50% subsidy limited to Rs. 20,000/- per ha.



Assistance to farmers to grow local & hybrid varieties of vegetables: 50% subsidy on cost of vegetable seed and 75% on vegetable seedlings sold through Departmental outlets.



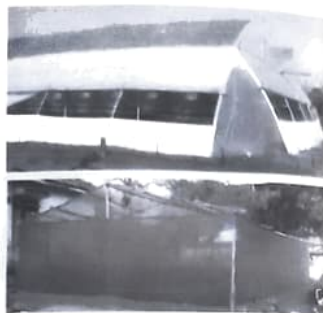
Assistance for Development of Kitchen Gardens: Vegetable Kits worth Rs. 5000/- each will be provided to any school/college/educational institute having an area for cultivation with available fresh water.



Assistance for cultivation of Hy. Coconut saplings/Dwarf: 50% assistance limited to Rs. 150/- per Hy. Coconut saplings. Min.0.1 ha for planting.



Assistance for cultivation of Flower & Vegetable in Poly houses/Shade net houses: a) 100% Subsidy on structure limited to prescribed standard cost. Max.0.4 ha. area and min. 100 sq.mts per beneficiary.
b) 50% Subsidy on planting material 50% limited to prescribed standard cost.



Assistance for cultivation of Vegetables.: Rs.80,000/- for development of Infrastructure for cultivation. Max 5 ha for SHG's and 1 ha for individual farmer. Scheme is implemented through Goa State Horticultural Corporation Ltd. (GSHCL)



Assistance for developing Mango orchards as a commercial cultivation in rocky areas and normal lateritic soils: Assistance up to Rs 2.00 lakhs per ha. for rocky areas and Rs. 1.0 lakhs per ha. for normal lateritic area plantations with a spacing of 8mt x 8mt to 10mt x 10 mts. Min area 0.5 ha and Max. upto 5 ha.



Assistance for setting up of Organic/ Bio-unit: 50% of the cost with maximum assistance up to Rs 25,000/unit.

Assistance for Bee keeping for Honey Production: Subsidy of 75% for General farmers limited to Rs.2.07 lakhs and 90% for ST/SC farmers limited to Rs. 2.48 Lakhs.



Promotion of vegetables with assured market: GSHCL procures vegetables from farmers produced locally at prefixed rates.



Assistance for digging & construction of Irrigation well: Minimum area of 0.125ha with 0.1 ha net area under crops . 75% subsidy on standard cost limited to Rs.2.0 lakhs for open well and 1.5 lakhs per Bore well.



Assistance for installation of new Pumpset, replacement of existing pumpsets with upgradation of irrigation system: Min. area of 0.125 ha with 0.1 ha net area under crops. 90% subsidy on standard cost for pumpsets upto 5 HP.



Assistant for replacement of old pumpset: 50% subsidy on standard cost.



Assistance for pumpset above 5 HP: 50% subsidy on standard cost

Assistant for laying pipes to carry water from the source to the field: Min. 0.125 ha with net area under crops 0.1ha. 50% subsidy limited to Rs. 20,000/- per ha and maximum of Rs. 1,00,000/- per farmer.



Installation of drip irrigation system: Min. area of 0.125 ha with 0.1ha. net area under crops. 90% Subsidy on standard cost.



Installation of sprinkler system: Min. area of 0.125 ha with 0.1ha. net area under crops. 75% Subsidy on standard cost limited.



Shetkari Aadhar Nidhi: Farmers are compensated for agriculture damage upto the extent of Rs. 40,000/- per ha.

Assistance to create water storage facilities: Minimum 0.125 ha with net area under crops of 0.1 ha. 50% subsidy on cost of construction or actual cost restricted to Rs. 2000/- per m³ with max. limit of Rs. 1,00,000/-.



Assistance for HDPE / UPVC Water Storage Tank: Minimum area of 0.05 ha to 0.15 ha under vegetable or seasonal flower cultivation. 50% subsidy on actual cost limited to maximum Rs. 3500/- per thousand liter water storage tank

Assured price for Arecanut: Rs.170/- per kg. limited to Rs.20/-per kg. for Supari category. Rs.120/- per kg. limited to Rs.10/- per kg. for other categories. Min.50 kg and Max. 6400 kgs/Year/farmer.



Assured price for Coconut: Difference between Assured price of Rs.12/- and average rate fixed, as notified by GSAMB. Average min. rate will not be less than Rs. 6/-, . Max. Assistance is 50,000 nuts, up to 5 ha. and Min. 500 nuts with a subsidy limit of Rs 3,00,000/year/ farmer.



Assured price for Cashewnut:

Difference between actual price and assured price of Rs. 125/- per kg. with Max. of Rs.25/- per Kg. limited to Max. 2000 kgs. in 5 ha. and Min. 50 kgs/year/ farmer.



Assured price for Oil palm:

Difference between price per tonne notified by GOPPMC and Rs. 9,000/tonne of FFB/year



Assured Price for paddy crop:

Difference between actual price and assured price of Rs.20 / kg limited to 5000 kg./ha. Max.7500 kg. and Min. 100 kgs/ farmer/season.



Assured price for Alsando crops:

Difference between actual price and Assured price of Rs. 100/- per kg. limited to max. of 800 kg and Min. 50kgs/farmer.



Subsidy for paddy, pulses, groundnut: 50% subsidy on seed limited for cultivation of Max. 2 ha. area



Salt resistant Paddy varieties: 100% subsidy limited to Rs. 30/- per kg on salt tolerant paddy varieties grown in khazan land



Promoting System of Rice Intensification (SRI): Incentive @ Rs. 10000/- per ha. to improve rice productivity. Min. assistance 0.1 ha.

Assistance for traditional fencing like barbed/GI wire, stone wall, GI or Synthetic Chain Link or Wire mesh to individual farmers/community farmers groups to save crops from domestic & Wild Animals: 75% subsidy for General and 90% SC/ST category on actual or standard cost approval from time. Max. subsidy for individual farmers is Rs. 2.00 lakhs. In case of group of farmers jointly taking up fencing there is no ceiling on maximum subsidy.



Assistance for Solar battery fencing: 90% subsidy on actual or standard cost approved from time to time limited to max. of Rs. 2.00 lakhs per individual. In case of group of farmers jointly taking up fencing there is no ceiling on max. subsidy.



Special fencing for small vegetable grower's cultivation: Min 500 sq mt area. 75%/90% of actual or standard cost approved from time to time limited to max. of Rs. 2.00 lakhs per individual farmer. In case of group of farmers jointly taking up fencing there is no ceiling on max. subsidy.



Assistance for purchase of Agriculture Machinery & Equipments to individual and group of farmers/NGO.: 50% subsidy of standard cost or actual cost whichever is less for purchase of Tractors, Mini Tractor, Paddy Combine Harvester, Power tiller & Mini tiller & 75% subsidy of standard cost or actual cost whichever is less for purchase of other approved agricultural machineries & equipments



Assistance for purchase of implements/attachment for agricultural Machinery: Subsidy of 50% of actual cost or standard cost whichever is less

Assistance for Community Farming: Assistance @90% is provided to community farming group on the standard cost on creation of infrastructures

Assistance for tilling, ploughing the soil and harvesting of paddy (Mechanised) for cultivation with appropriate machineries: 50% subsidy on standard hire charges of agriculture machinery while booking Government machinery & those from registered service providers of agricultural machineries enrolled with the department.



Assistance for Paddy Transplanting using machineries: Subsidized amount of Rs. 15,000/- per ha (50% subsidy on Rs. 30,000/-) for individual & subsidy of Rs. 18,000/- per ha, (60% subsidy on Rs.30,000) for collective transplanting/group of farmers



Assistance for Removal of shrubs, bushes, weeds by using power driven machine/manual: Rs. 15000/- per ha or 50% cost whichever is less



Assistance on purchase of pesti-cides/Bio-pesticides/weedicides to protect crops: 75% subsidy limited to Rs. 4500/- per ha. for general category and 90% subsidy to ST/SC farmers limited to Rs. 5400/- per ha. for a Max. of 4.00 ha. area

Assistance for purchase of plant protection equipment for protection of crops like sprayers: 75% subsidy for General and SC/ST farmers

Construction of Biogas Units: 90% subsidy against standard cost as per the size of biogas plant.



Assistance on purchase of soil conditioners/ Agriculture lime for improvement of Soil Health: 75% subsidy limited to Rs.6000/- per ha. to all categories of farmer. Maximum upto 4 ha per farmer.

Assistance on purchase of micro nutrients like Boron, Magnesium Sulphate, and other notified micro nutrients: 75% subsidy limited to Rs. 7500/- per ha. to all categories of farmer. Maximum upto 4 ha per farmer.

Assistance for Compost production through portable/Pucca units: 75% subsidy limited to Rs.1950/- per cubic mts for Pucca units to all categories of farmer. 90% subsidy on standard cost for portable unit max. 3 units & max. amount Rs. 7500/- per farmer

Assistance for Vermi-Compost production through portable/ Pucca units: 75% subsidy limited to Rs. 1950/- per cubic mts for Pucca units to all categories of farmer. 90% subsidy on standard cost for portable unit max. 3 units & max. amount Rs. 7500/- per farmer



Assistance to SC/ST for purchase & use of various Agriculture inputs like seed, planting material, fertilizers, pesticides, etc: 75% subsidy limited to Rs. 12000/- per ha. Maximum limit 2 ha per farmers



Assistance for Sugarcane planting material: Assistance @ 50% of the cost of planting material limited to Rs. 22,500/- per ha for purchase of sugarcane seedling. Rs. 15,000/- per ha for purchase of locally available sugarcane seed setts and Rs. 18750/- per Ha for sugarcane setts procured from neighbouring state is provided to sugarcane farmer for planting of sugarcane.



Special assistance for sugarcane growers: Due to non-functioning of Sanjivini Sahakari Karkhana, financial assistance of Rs. 2800/- per MT for sugarcane of 2021-22, Rs 2600/- per MT for sugarcane of 2022-23, Rs. 2400/- per MT for sugarcane 2023-24 and Rs. 2200/- for sugarcane of 2024-25 will be provided to sugarcane farmers

Assistance for purchase of Organic inputs: 50% cost limited to Rs. 10,000/- per hectare and maximum up to 2 hectare per beneficiary (For inputs such as Organic manures, City compost, Vermi-compost, Press-mud, Neem cake, Edible/Non edible ground oilseed cakes, bone-meal, enriched organic manures, and all those bulky organic fertilizers)

Assistance for purchase of Organic inputs: 75% of the cost limited to 5,000/- per ha. with maximum up to 2 hectare per beneficiary (For inputs such as Bio-fertilizers, Bio-pesticides, Bio-insecticides, Bio-stimulants, Bio-control agents, Bio-control aids, pheromone traps, light traps, etc) "and for all other products certified for use in organic agriculture": 50% of cost, limited up to Rs. 5,000/- per hectare with maximum up to 1 hectare per beneficiary.

Contact Details for Technical and Scheme Information

<i>Sr. No.</i>	<i>Name of the Office</i>	<i>E-mail</i>
1	Asstt. Director of Agriculture (FT), Farmers Training Centre, Ela Old-Goa Bio Control Laboratory / Mushroom Unit	adaft-agri.goa@nic.in
2	Zonal Agricultural Officer, Valpoi	zaovalpoi-agri.goa@nic.in
3	Zonal Agricultural Officer, Bicholim	zaobicholim-agri.goa@nic.in
4	Zonal Agricultural Officer, Sakhali	zaosakhali-agri.goa@nic.in
5	Zonal Agricultural Officer, Pernem	zaopernem-agri.goa@nic.in
6	Zonal Agricultural Officer, Mapusa	zaomapusa-agri.goa@nic.in
7	Zonal Agricultural Officer, Tiswadi	zaotiswadi-agri.goa@nic.in
8	Zonal Agricultural Officer, Ponda	zaoponda-agri.goa@nic.in
9	Zonal Agricultural Officer, Sanguem	zaosanguem-agri.goa@nic.in
10	Zonal Agricultural Officer, Quepem	zaoquepem-agri.goa@nic.in
11	Zonal Agricultural Officer, Canacona	zaocanacona-agri.goa@nic.in
12	Zonal Agricultural Officer, Dharbandora	zaodharbandora-agri.goa@nic.in
14	Zonal Agricultural Officer, Margao	zaomargao-agri.goa@nic.in
15	Farm Superintendent, Codar	fsponda-agri.goa@nic.in
16	Farm Superintendent, Kalay	fskalay-agri.goa@nic.in
17	Mechanical Cultivation Officer, Tonca	mcotonca-agri.goa@nic.in
18	Mechanical Cultivation Officer, Mapusa	mcomapusa-agri.goa@nic.in
19	Mechanical Cultivation Officer, Margao	mcomargao-agri.goa@nic.in
20	Mechanical Cultivation Officer, Curchorem	mcocurchorem-agri.goa@nic.in
21	Krishi Vigyan Kendra, South, Margao-Goa	pcmargao-agri.goa@nic.in
22	Soil Testing Laboratory (N)	adaft-agri.goa@nic.in
23	Soil Testing Laboratory (S)	pcmargao-agri.goa@nic.in
24	Goa State Horticulture Corporation, "Kullagor" Tonca, Caranzalem - Goa.	gshcl123@gmail.com
24	ATMA North Goa	atmanorthgoa@gmail.com
25	ATMA South Goa	atmasouthgoa@gmail.com

FOR MORE DETAILS CONTACT ABOVE

DIRECTORATE OF AGRICULTURE

"Krishi Bhavan" Tonca, Caranzalem - Goa

Phone No. (0832) 2465840, 2465443, 2465845 Fax No. (0832) 2465441

E-mail: dir-agri.goa@nic.in

Website: www.agri.goa.gov.in